



# APPLIED SCIENCE

Pearson BTEC Extended Certificate

## PROFILE

The Pearson BTEC Level 3 Applied Science course is part of a larger suite of BTEC Applied Science qualifications, at a range of sizes, which share the common purpose of helping people to become occupationally ready to take up employment in the applied science sector at the appropriate level.

## CONTACT

**Subject Teachers:**  
Miss K Wanless

**EMAIL:**  
wanlessk5@hwbcymru.net

## ASSESSMENT STRUCTURE

58% externally assessed under exam conditions.

42% skills assessment under direct teacher supervision marked internally and externally moderated.

This is a 2-year course although there is the option to complete only the first year and be awarded a certificate (equivalent to half an A-Level) instead of the full extended certificate.

## TYPICAL ENTRY PROFILE

---

At least two C grades in GCSE Double Award Science are essential.

To be able to cope with the level of material covered during the course, it is essential that students have at least a C grade in GCSE Mathematics as well.

## COURSE STRUCTURE

---

### Year 12

Unit 1 – Principles and Applications of Science 1. This consists of Biology, Chemistry and Physics content and is then examined in January. There are three 40-minute exams, with both short and long answer questions.

Unit 2 – Practical Scientific Procedures and Techniques. This is an internally assessed unit that consists of 4 written assignments.

### Year 13

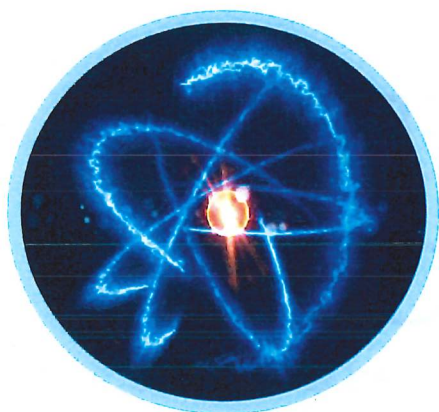
Unit 3 – Science Investigation Skills. This consists of Biology, Chemistry and Physics content and is then examined in the Summer. The assessment is a practical exam where they will carry out an experiment and then assess and evaluate their results.

The second unit in year 13 is selected from a list of optional units. These are either Biology, Chemistry or Physics topics. They are internally assessed units that consist of either 3 or 4 assignments.

## HOW WILL THIS QUALIFICATION HELP ME IN THE FUTURE?

---

The applied science industry offers huge potential for learners interested in it. The UK is currently regarded as a world leader in sectors including renewable energy, space, low carbon, pharmaceutical, utilities, automotive, agri-food and bioscience. UCAS has reviewed the qualification to assess its value for access to higher education, and has allocated UCAS points equivalent to an A Level.



# PHYSICS

WJEC AS/A2 Level

## PROFILE

*A' level Physics is suitable if you have an interest in, and enjoy, physics. Physicians want to find out about how things work in the physical world and enjoy applying their mind to solving problems. In studying A' Level Physics you can enjoy carrying out investigations by the application of imaginative and logical thinking. A' Level Physics is an excellent choice for students who want to use physics to move on to further studies in Higher Education or to support other qualifications or enter physics-based employment.*

## CONTACT

### Subject Teachers:

Miss K Wanless  
Mr J Winship

### EMAIL:

wanlessk5@hwbcymru.net  
winshipj2@hwbcymru.net

## ASSESSMENT STRUCTURE

*100% terminal assessment with 4 terminal exams.*

## TYPICAL ENTRY PROFILE

*Students must have attained at least a grade B on Higher Tier papers in GCSE Physics or GCSE Double Award Science, GCSE Maths and GCSE English. We also strongly recommend taking A Level Maths.*

## COURSE STRUCTURE

### Year 12

*AS Unit 1: Motion, Energy and Matter. Written examination : 1 hour 30 minutes*

*AS Unit 2: Electricity and Light. Written examination: 1 hour 30 minutes*

*Short answers and extended answer questions, some in practical context, comprehension question.*

### Year 13

*A2 Unit 3: Oscillations and Nuclei. Written examination: 2 hours 15 minutes*

*A2 Unit 4: Fields and Options. Written examination: 2 hours*

*Short answer and extended answer, some in a practical context.*

*Choice of one option out of four:*

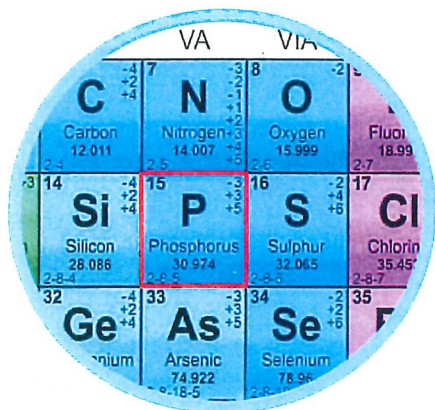
- Alternating Currents
- Medical Physics
- The Physics of Sports
- Energy and the Environment

### A2 Unit 5

*Practical Examination*

## HOW WILL THIS QUALIFICATION HELP ME IN THE FUTURE?

*Physics leads on to a wide range of courses and careers. You could use Physics to support other qualifications or move on to further studies or employment. Physics is recognised as an entry qualification for a wide range of Higher Education courses and employment opportunities. Behind Medicine and Law, Physics graduates on average, boast the highest graduate wage.*



# CHEMISTRY

WJEC AS/A2 Level

## PROFILE

The Advanced Level specification provides a suitable foundation for the study of Chemistry or a related area in higher education. It also provides a coherent, satisfying and worthwhile course of study for candidates who do not progress to further study in the subject.

## CONTACT

### Subject Teachers

Ms. J Lockett  
Mr. J Winship  
Mr. A Sear

### EMAIL:

Lockettj4@hwbcymru.net  
Winshipj2@hwbcymru.net  
Seara7@hwbcymru.net

## ASSESSMENT STRUCTURE

All terminal examinations.

## TYPICAL ENTRY PROFILE

Students must have attained at least a grade **B on higher tier papers** in GCSE Chemistry and Double Award Science. It is also **strongly recommended** that students have attained a B grade in Mathematics and a C grade in English due to the complexity of the qualification and the advanced calculations that will be required.

The ideal student takes a mature approach and has a sound understanding of earlier work studied at GCSE level.

## COURSE STRUCTURE

### Year 12

Unit 1: Short answer questions, structured and extended answer questions  
The Language of Chemistry, Structure of Matter and Simple Reactions Unit  
2: Energy, Rate and Chemistry of Carbon Compounds

Short answer questions, structured and extended answer questions.

### Year 13

Unit 3: Physical and Inorganic Chemistry

Short answer questions, structured and extended answer questions

Unit 4: Organic Chemistry and Analysis

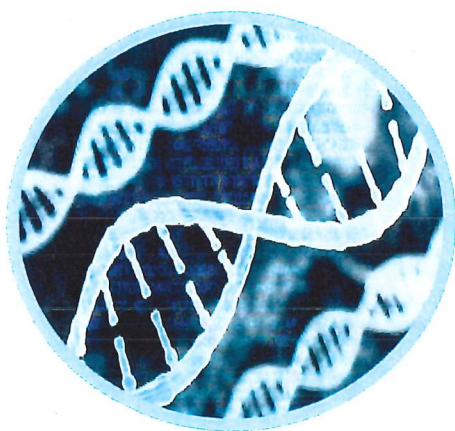
Short answer questions, structured and extended answer questions.

Unit 5: Practical Examination

## HOW WILL THIS QUALIFICATION HELP ME IN THE FUTURE?

Advanced Level Chemistry provides an essential foundation for the further study of Chemistry and other related higher education courses such as Medicine, Biochemistry, Molecular Biology, Chemical Engineering etc. It is a very useful supporting subject for a range of science courses.





## PROFILE

A' Level Biology encourages students' interest in, and enthusiasm for the subject, including developing an interest in further study and careers in this area. Students can appreciate how society makes decisions about scientific issues and how the sciences contribute to the success of the economy and society. Through practical analysis they can develop and demonstrate a deeper appreciation of the skills, knowledge and understanding of How Science Works. A' Level Biology is essential if students are to develop essential knowledge and understanding of different areas of Biology and how they relate to each other.

## CONTACT

### Subject Teachers

Miss. S Simons  
Mr. J Hick

### EMAIL:

[Simons11@hwbcymru.net](mailto:Simons11@hwbcymru.net)  
[Hickj10@hwbcymru.net](mailto:Hickj10@hwbcymru.net)

## ASSESSMENT STRUCTURE

All terminal examinations.

# BIOLOGY

## WJEC AS/A2 LEVEL

### TYPICAL ENTRY PROFILE

---

Students must have attained at least grade B on only Higher Tier papers in GCSE Biology or GCSE Double Award Science. Potential students must have strong mathematics skills and a proven competence in English (preferably a B grade).

### COURSE STRUCTURE

---

#### Year 12

Unit 1: Basic Biochemistry and Cell Organisation

1½ hours - Structured questions and essay.

Unit 2: Biodiversity and Physiology of Body Systems.

1½ hours - Structured questions and essay.

#### Year 13

Unit 3: Energy, Homeostasis and the Environment

2 hours - Structured questions and essay.

Unit 4: Variation, Inheritance and Options

2 hours - Structured questions and essay.

Unit 5: Practical Examination

Experimental task – 2 hours

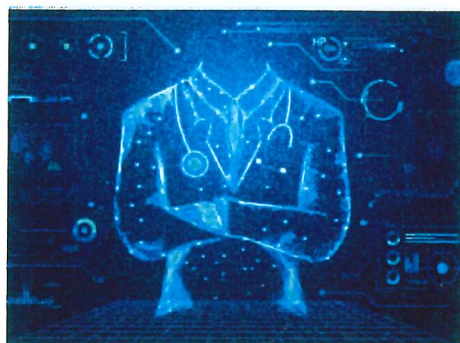
Practical Analysis Task – 1 hour

### HOW WILL THIS QUALIFICATION HELP ME IN THE FUTURE?

---

This course provides a suitable foundation for the study of Biology or a related course in higher education, for progression to the next level of vocational qualifications, or for direct entry into employment. It also provides a coherent, satisfying and worthwhile course of study for students who do not progress to further studies in Biology.





# MEDICAL SCIENCE

WJEC AS/A2 Level

## PROFILE

Medical scientists are at the forefront of healthcare services, as they are vital in the diagnosis of disease, determining the effectiveness of treatments and searching for new cures. The main purpose of the qualification is to provide learners with the knowledge, understanding and skills in key scientific principles to support progress to higher education or employment in areas of medical science, such as job roles in physiological sciences or clinical laboratory services.

## CONTACT

**Subject Teacher**  
Ms J Lockett

**EMAIL:**  
Lockettj4@hwbcymru.net

## ASSESSMENT STRUCTURE

AS Level – Year 12

Unit 1 25%

Unit 2 12.5%

Unit 3 12.5%

A2 Level – Year 13

Unit 4 25%

Unit 5 12.5%

Unit 6 12.5%

## TYPICAL ENTRY PROFILE

The following criteria are essential for enrolment onto the course. Grade C or above in ANY science and a C grade in Mathematics and English.

## COURSE STRUCTURE

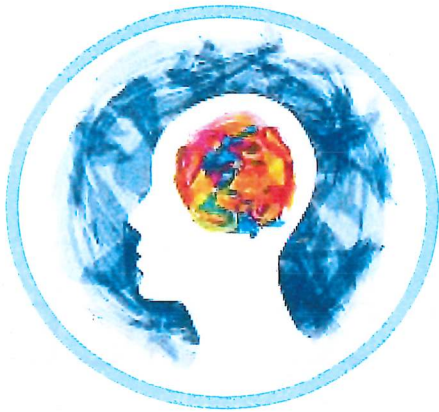
The qualification covers the key topic areas of health, physiology and disease, as well as providing the opportunity to study the areas of pharmacology, physiological measurement, clinical testing and medical research

	Unit	Assessment
1	Human health and disease	External
2	Physiological measurement techniques	Internal
3	Medical science research methods	Internal

	Unit	Assessment
1	Medicines and treatment of disease	Internal
2	Clinical laboratory techniques	External
3	Medical case study	External

## HOW WILL THIS QUALIFICATION HELP ME IN THE FUTURE?

This qualification equips learners with scientific knowledge and understanding, as well as practical skills that would support progression to university or a range of job roles within the areas of life sciences, i.e. carrying out a range of laboratory and scientific tests to support the diagnosis and treatment of disease. Alternatively, there would also be opportunities to progress to job roles within the physiological sciences, working directly with patients.



## PROFILE

Psychology is the scientific study of the mind and behaviour. It is a demanding subject that explores the fundamental questions of why we, as a species, think, feel and behave as we do. The increasing fascination that society has with Psychology is reflected in its popularity at AS and A level.

## CONTACT

**Subject Teacher**  
Miss P Lord

**EMAIL:**  
Lordp12@hwbcymru.net

## ASSESSMENT STRUCTURE

AS Level – Year 12

Unit 1 20%

Unit 2 20%

A2 Level – Year 13

Unit 3 40%

Unit 4 20%

# PSYCHOLOGY

WJEC AS/A2 Level

## TYPICAL ENTRY PROFILE

---

The following criteria are essential for enrolment onto the course. Grade B or above in Maths or Numeracy. Grade B in English Language or Literature and a C grade in ANY Science.

## COURSE STRUCTURE

---

### Years 12 and 13

AS Unit 1: Past to Present Students will gain a solid grounding in some of the core elements of psychology.

AS Unit 2: Using Psychological Concepts. Students will explore a number of debates from a psychological perspective; including the ethics of neuroscience, the mother as primary care-giver of an infant and using techniques to control behaviour.

A2 Unit 3: Implications in the Real World. Students will choose to study three behaviours from: Addiction, Autistic Spectrum, Bullying, Criminal, Schizophrenia and Stress.

A2 Unit 4: Applied Research Methods. Personal Investigation. Students will gain first-hand experience of two research methods.

## HOW WILL THIS QUALIFICATION HELP ME IN THE FUTURE?

---

Postgraduate study enables students to become qualified practitioners in the fields of clinical, forensic and educational psychology. The study of Psychology is also highly valued by employers in social work, nursing, sales, advertising, public relations, counselling, media and general management to name but a few. At A level you will be asked to rigorously analyse, evaluate and research; these are all transferable skills that are in great demand in the workplace.

# ART

## WJEC AS/A2



### PROFILE

The Art Department will be offering a one route Advanced Art Course with the opportunity to specialise in a wide variety of Art areas. Within the WJEC specification, we will be offering students the chance to specialise in Fine Art, Graphics, Photography, Textiles or 3D Design

This course is an ideal option for those wishing to follow a broad based art curriculum. This could lead to a pre – Degree Foundation course or direct entry to degree through design specialisms such as Photography, Graphics or Illustration.

### CONTACT

**Subject Lead**  
Mrs. N Rees

EMAIL:  
ncrees@llanwernhigh.org

### ASSESSMENT STRUCTURE

Unit1 – 40%  
Unit 2 – 36%  
Unit 3 – 24%

Unit 3 is a terminal exam  
Units 1 & 2 are coursework

### TYPICAL ENTRY PROFILE

---

Students should have achieved at least a grade C at GCSE Art and should have a strong interest in the subject.

### COURSE STRUCTURE

---

#### Year 12

Coursework Portfolio: September – April Deadline. Candidates will explore key aspects of fine art focusing on drawing, painting and artist led research. Students should produce in depth sketchbook work and a collection of studies in a portfolio format which exemplifies work carried out during the AS course. There is no exam in year 12.

#### Year 13

Unit 2 Coursework Personal Investigation - Candidates are required to build upon the knowledge, understanding and skills gained in the AS with greater depth of study. Candidates are required to develop their own artistic investigation based on an idea, issue or technique leading to artistic outcomes with a 1000-3000 word essay included with the assignment.

Unit 3 – Externally Set Assignment (Exam) February to May - Supervised Time – 15 hours. Question papers contain 8-10 exciting starting points. Candidates choose one. The examination period is 15 hours.

### HOW WILL THIS QUALIFICATION HELP ME IN THE FUTURE?

---

AS/A Level Art and Design will prepare you for a Foundation Course in Art which can lead to a Degree Course in a variety of areas including:

3D Design    Graphic Design    Multimedia

Photography    Fashion Architecture    Fine Art





## PROFILE

**TEXTILE DESIGN ENCOMPASSES A VERY BROAD RANGE OF MATERIALS, TECHNIQUES AND PROCESSES, INCLUDING A GROWING NUMBER OF INTERDISCIPLINARY APPROACHES. THESE COMPRISE WOVEN, EMBROIDERED, KNITTED, PRINTED, PAINTED, DYED, MANIPULATED, EMBELLISHED AND CONSTRUCTIONAL METHODS WHICH ARE UTILISED TO PRODUCE A GREAT VARIETY OF TEXTILE OUTCOMES THAT INCLUDE COSTUME AND FASHION DESIGN, ACCESSORIES AND BODY ADORNMENT.**

## CONTACT

**Subject Lead**  
Mrs N Archer

EMAIL:  
Archern@newportschools.wales

## ASSESSMENT STRUCTURE

Year 12- Unit 1- project/portfolio

Year 13- Unit 2- personal investigation  
Unit 3- Externally set assignment

# ART AND DESIGN- TEXTILE DESIGN

WJEC A Level

## TYPICAL ENTRY PROFILE

To gain access to this course you will need to be interested in Art, design and textiles and should have achieved at least 5 GCSEs or equivalent including English and Math's grade C or above.

## COURSE STRUCTURE

Year 12 and 13

The A level in Textiles consists of a total of 3 units, 1 AS unit and 2 A2 units:

AS-

Unit 1: Personal Creative Enquiry (40% of the qualification)

An extended, exploratory project/portfolio and outcome/s based on themes and subject matter which are personal and meaningful to the learner.

A2-

Unit 2: Personal Investigation (36% of the qualification)

Consists of two integrated constituent parts:

1. a major in-depth critical, practical and theoretical investigative project/portfolio and outcome/s based on themes and subject matter that have personal significance.

2. An extended written element of 1000 words minimum, which may contain images and texts and must clearly relate to practical and theoretical work using an appropriate working vocabulary and specialist terminology.

Unit 3: Externally set assignment (24% of the qualification)

This component is based on preparatory study that leads to a 15 hour period of sustained focus in which you will produce a response to a chosen visual or written stimuli.

## HOW WILL THIS QUALIFICATION HELP ME IN THE FUTURE?

An A level in Art and design-textiles can provide a route to employment or higher education in the many diverse areas of the creative industry.



## PROFILE

This course provides students with the opportunity to develop practical performance skills and gain a greater understanding of how theatre and plays are structured and performed.

The course will be taught in a Drama Studio complete with lights and resources. Students will have the opportunity to see live theatre in different venues and locations.

The subject demands practical, creative and communication skills in almost equal measure. You will extend your ability to create drama and theatre, either in a performing or production role. You need to be curious about issues and ideas and have a creative instinct for communicating your views through drama. You may be keen on acting, writing or on the visual and technical side of theatre and wish to develop your skills in some or all of these areas. There is an expectation that some rehearsals will be after school.

## CONTACT

**Subject Lead**  
Mrs. M Clarke

EMAIL:  
[mclarke@llanwernhigh.org](mailto:mclarke@llanwernhigh.org)

## ASSESSMENT STRUCTURE

Unit 1 – 24%  
Unit 2 – 16%  
Unit 3 – 36%  
Unit 4 – 24%

Units 2 & 4 are terminal exams  
Units 1 & 3 are coursework

# DRAMA

## WJEC AS/A2 LEVEL

### TYPICAL ENTRY PROFILE

---

Ideally, students will have achieved at least a grade C or at GCSE Drama and at least a grade C at GCSE English Language. All students will be expected to have an enthusiastic interest in the subject. However, It is not a prerequisite that students have studied GCSE Drama, though in this case, it is advisable that students should have some performance experience.

### COURSE STRUCTURE

---

#### Year 12

##### UNIT 1 – THEATRE WORKSHOP

Learners participate in the creation, development and performance of a piece of theatre based on the reinterpretation of an extract from a text supplied by the exam board. The piece will be developed using the techniques and working methods of a theatre practitioner or company.

##### UNIT 2- TEXT IN THEATRE

This unit comprises of an 'open book written examination in which the learners will answer a series of questions based on the text set by the exam board.

#### Year 13

##### UNIT 3 - TEXT IN ACTION

The learners will participate in the creation, development and performance of two pieces of theatre based on a stimulus supplied by the exam board. The first is a devised piece using the techniques and working methods of either a theatre practitioner or a theatre company. The second piece is an exploration from text in a contrasting style.

##### UNIT 4 - TEXT IN PERFORMANCE

The learners will be assessed by an 'open book' written examination in which the learners will answer two essay based questions on two contrasting texts.

### HOW WILL THIS QUALIFICATION HELP ME IN THE FUTURE?

---

A qualification in this subject can lead to further study in Drama, Theatre Studies and Performing Arts in Higher Education at degree or HND level. It can be used as part of your course to broaden your studies and may lead on to a career in the Performing Arts Industries. Drama A level is also a useful qualification to have if you wish to pursue a career where you engage with others in a public role, such as Law, the Police and Business.



## PROFILE

The BTEC Extended Diploma in Music is designed for learners aged 16+ who wish to pursue a vocationally relevant qualification in the music sector. This sector is a dynamic area of the performing arts.

## CONTACT

**Subject Lead**  
Mr A Newell

**EMAIL:**  
anewell@llanwernhigh.org

## ASSESSMENT STRUCTURE

100% skills assessment under direct teacher supervision marked internally and externally moderated.

This is a 2 year course with no AS level components.

# MUSIC

## PEARSON BTEC Subsidiary Diploma

### TYPICAL ENTRY PROFILE

---

Students will have achieved at least a grade C at GCSE English and Maths. All students will be expected to have an enthusiastic interest in the subject. It is not a prerequisite that students have studied GCSE Music, although in this case it is advisable that students should have some musical experience such as playing an instrument or singing.

### COURSE STRUCTURE

---

#### Year 12 and 13

This is primarily an Applied General qualification, equivalent in size to an A level, which has been designed to occupy one third of the curriculum within a broader programme of study.

Its main purpose is to allow learners to develop the core specialist knowledge, understanding and skills in areas including

- Music Performance Techniques
- Composing Music
- Working And Developing As A Musical Ensemble
- Aural Perception Skills
- Music Project
- Studying Music From Around The World

### HOW WILL THIS QUALIFICATION HELP ME IN THE FUTURE?

---

There are many career prospects for well-qualified musicians either as: performers/composers or as administrators, publishers, teachers, self-employed teachers, self-employed composers, broadcasters, journalists and sound engineers.

There are numerous courses available in Higher Education where Music may be studied to a higher level.





# PHOTOGRAPHY

## WJEC AS/A2 LEVEL

### PROFILE

AS and A Level photography introduces students to photographic skills and processes through practical work, the critical and contextual study of imagery and development of a personal portfolio. As the course progresses in A level students develop their independent themes and strengths through individually set tasks. Throughout the course you will explore themes of your own choice developing your knowledge and understanding in the creative making processes. You will examine the relationship of the artist and the viewer in a social context and prepare your own work for exhibition.

### CONTACT

#### Subject Lead

Miss S Yeowart

#### EMAIL:

syewart@llanwernhigh.org

### ASSESSMENT STRUCTURE

Coursework element 76%

Terminal Exam 24%

### TYPICAL ENTRY PROFILE

---

It is essential that students have a minimum C grade in GCSE English. It is desirable that students have at least grade C in GCSE Art or GCSE Photography. All students will be expected to have an enthusiastic interest in the subject.

### COURSE STRUCTURE

---

#### Year 12

AS Level consists of the submission of an extended, exploratory coursework project / portfolio titled 'Personal Creative Enquiry' and makes up 40% of the overall A Level qualification. The course is structured so that learners have opportunities to build the skills, knowledge and understanding necessary to develop the individual 'Personal Creative Enquiry' over the year. Practical enquiry will be linked with, and informed by critical and contextual study.

#### Year 13

##### UNIT 2- PERSONAL INVESTIGATION

This makes up 36% of the qualification and consists of a major, in depth, practical, critical and theoretical investigative project / theme based portfolio and outcome/s with integrated extended written and critical and contextual analysis. Assignments, briefs or themes undertaken are to be determined by the learner and teacher.

##### UNIT 3 - EXTERNALLY SET EXAMINATION

This makes up 24% of the qualification. This unit represents the culmination of learners' Advanced study and provides a substantial challenge. Learners are required to develop independently a personal response to one of a varied stimuli set by WJEC within specified time constraints- a set preparatory time and a 15 hour examination.

### HOW WILL THIS QUALIFICATION HELP ME IN THE FUTURE?

---

This is an excellent course that should be regarded not only as a means of going further in photography but also as a means of achieving an AS / A Level qualification to enable entry onto higher education courses or employment.



## PROFILE

English Literature is a superb 'A' Level choice for all those students who love books, reading and have thoroughly enjoyed their GCSE texts. It is helpful if students have achieved a B grade in both English Language and English Literature at GCSE in order to cope with the academic requirements of this course.

## CONTACT

### Subject Lead

Miss G Button

### EMAIL:

buttong@hwbcymru.net

## ASSESSMENT STRUCTURE

AS: Two external exams

A2: Two external exams, plus one piece of coursework

# ENGLISH LITERATURE

## WJEC AS/A2 LEVEL

### TYPICAL ENTRY PROFILE

---

Essential: C or above in English Language and English Literature.

Students with B grades at GCSE are statistically more likely to achieve a C grade and above at AS level.

### COURSE STRUCTURE

---

#### Year 12

Unit 1: Prose Fiction Pre-1900 and Drama - a particular focus of this module will be cultural and contextual influences and how attitudes and values are expressed in texts.

Unit 2: Poetry Post-1900 - In addition to being able to analyse the texts closely and independently, students will have to be aware of the variety of ways in which a text will be interpreted. They will also consider the ways in which texts relate to one another.

#### Year 13

Unit 3: Poetry Pre-1900 and Unseen Poetry - students are required to study one text analysing how meanings are shaped in poetry texts and the way writers adapt structure, form and language for effect.

Unit 4: Shakespeare - this module focuses upon one of Shakespeare's plays with a particular focus on how meaning is shaped in drama texts, as well as cultural and contextual influences on writers and readers.

Unit 5: Prose Study Coursework - a 2500-3500 word essay based on the reading of two prose texts from different periods.

### HOW WILL THIS QUALIFICATION HELP ME IN THE FUTURE?

---

Even if you do not wish to study English Literature at university, admissions tutors and employers are impressed by the evidence an English Literature qualification provides of transferable skills and competencies such as analysis, argument and research. It is an excellent companion to History, Theatre Studies and Modern Foreign Languages and students go on to read courses as diverse as Law, Classics and Ancient History at the institution of their choice.



## CONTACT

## ASSESSMENT STRUCTURE

WJEC AS/A2 Level

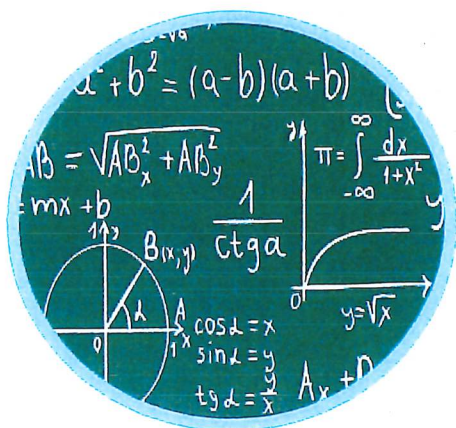
## TYPICAL ENTRY PROFILE

## COURSE STRUCTURE

## HOW WILL THIS QUALIFICATION HELP ME IN THE FUTURE?

Mathematics is an excellent choice for students who wish to pursue employment in finance, statistics, navigation (such as Air traffic Control), management and accountancy. It can also lead to a career in many other paths such as architecture, designing computer games, medicine and veterinary science.





## PROFILE

Mathematics is a fascinating and rewarding subject that underpins many other areas of learning. It has been fundamental to the development of the society in which we live. Mathematicians are highly valued and well placed for a diverse range of careers.

A Level Mathematics is divided into 2 areas: at its heart lies Pure Mathematics, which is mainly concerned with Algebra, Geometry, Calculus and Trigonometry, and Applied Mathematics which applies these techniques to solve problems in the world about us.

## CONTACT

**Subject Lead**  
Mr J Copus

**EMAIL:**  
Copusj1@hwbcymru.net

## ASSESSMENT STRUCTURE

100% terminal assessment with 5 terminal exams. 3 in year 12 and 2 in Y13. Each unit is equally weighted (13.3%) in Y12 and (30%) in Y13

# FURTHER MATHS

WJEC AS/A2 Level

## TYPICAL ENTRY PROFILE

Students will have opted to take A level Maths to supplement this course.

## COURSE STRUCTURE

### Year 12

Core Mathematics – topics covered will be extension of A level Maths with a few additional concepts such as complex numbers and matrices.

Statistics – this build upon statistical topics taught in A level Maths

Mechanics -

### Year 13

This year will build upon topics taught in Y12. Students will complete unit 4 which is core mats and will choose from either unit 5 or 6 (Statistics or mechanics)

## HOW WILL THIS QUALIFICATION HELP ME IN THE FUTURE?

Mathematics is an excellent choice for students who wish to pursue employment in finance, statistics, navigation (such as Air traffic Control), management and accountancy. It can also lead to a career in many other paths such as architecture, designing computer games, medicine and veterinary science.



## PROFILE

BTEC sport at level 3 (Extended Certificate) provides students with 8 hours per fortnight of theory lessons (which incorporate some practical assessments) to further their knowledge and understanding of the subject area and relate it to the sport of the student's choice. This qualification is the equivalent to 1 A level and can be combined with other A level subjects to create the students sixth form studies.

## CONTACT

### Subject Teachers:

Mr Jones  
Mrs Tudball  
Mr Chapman  
Mrs Griffin  
Mrs Mathews

### EMAIL:

Jonesh504@hwbcymru.net  
Tudballn@hwbcymru.net

## ASSESSMENT STRUCTURE

100% internal assessment through coursework

# SPORT

## Pearsons BTEC Level 3- Extended Certificate

## TYPICAL ENTRY PROFILE

Students must have attained at least L2 Pass (or C grade in a compatible subject) and GCSE Mathematics and GCSE English.

## COURSE STRUCTURE

### Year 12

2 units will be assessed through the first year of the course and consist of:

- Health and wellbeing
- Careers in Sport

### Year 13

1 unit will be assessed through the first year of the course and consist of:

- Developing Coaching skills

## HOW WILL THIS QUALIFICATION HELP ME IN THE FUTURE?

Sports qualifications alongside other A levels can lead to many exciting and interesting career opportunities. If partnered with a human science there is the opportunity to study a career in physiotherapy and strength and conditioning. If partnered with a Psychology A level there is there opportunity to explore careers in the sports psychology industry looking into performances of team and individual athletes. There is also the opportunity to go into careers such as teaching, coaching and the police force/ armed forces.



## PROFILE

BTEC sport at level 3 (Extended Diploma) provides students with 24 hours per fortnight of theory lessons (which incorporate some practical assessments) to further their knowledge and understanding of the subject area and relate it to the sport of the student's choice. This qualification is the equivalent to 3 A levels.

## CONTACT

### Subject Teachers:

Mr Jones  
Mrs Tudball  
Mr Chapman  
Mrs Griffin  
Mrs Mathews

### EMAIL:

Jonesn504@hwbcymru.net  
Tudballn@hwbcymru.net

## ASSESSMENT STRUCTURE

100% internal assessment through coursework

# SPORT

## Pearsons BTEC Level 3- Extended Diploma

## TYPICAL ENTRY PROFILE

Students must have attained at least L2 Pass (or C grade in a compatible subject) and GCSE Mathematics and GCSE English.

## COURSE STRUCTURE

### Year 12

6 units will be assessed through the first year of the course and consist of:

- Health and wellbeing
- Careers in Sport
- Developing Coaching skills
- Fitness testing
- Sports Development
- Self-Employment in sports

### Year 13

6 units will be assessed through the first year of the course and consist of:

- Applying coaching skills
- Pearsons set project
- Sports Nutrition
- Sports Injuries
- Anatomy and Physiology
- Fitness training

## HOW WILL THIS QUALIFICATION HELP ME IN THE FUTURE?

This sports qualification can lead to many exciting and interesting career opportunities. There is a chance to explore careers in the sports psychology industry looking into performances of team and individual athletes, Sports Physiotherapy and strength and conditioning coaching. There is also the opportunity to go into careers such as teaching, coaching and the police force/ armed forces.





# FOOD SCIENCE AND NUTRITION

WJEC Level 3 Certificate

## PROFILE

AN UNDERSTANDING OF FOOD SCIENCE AND NUTRITION IS RELEVANT TO MANY INDUSTRIES AND JOB ROLES. CARE PROVIDERS AND NUTRITIONISTS IN HOSPITALS USE THIS KNOWLEDGE, AS DO SPORTS COACHES AND FITNESS INSTRUCTORS. HOTELS AND RESTAURANTS, FOOD MANUFACTURERS AND GOVERNMENT AGENCIES ALSO USE THIS UNDERSTANDING TO DEVELOP MENUS, FOOD PRODUCTS AND POLICIES THAT SUPPORT HEALTHY EATING INITIATIVES. MANY EMPLOYMENT OPPORTUNITIES WITHIN THE FIELD OF FOOD SCIENCE AND NUTRITION ARE AVAILABLE TO LEARNERS WHO HAVE STUDIED FOOD SCIENCE AND NUTRITION.

## CONTACT

### Subject Lead

Mrs R Fudge

EMAIL:

Fudger@newportschools.wales

## ASSESSMENT STRUCTURE

One exam making up 50% of the final grade.

One coursework unit internally marked and externally verified.

## TYPICAL ENTRY PROFILE

To gain access to this course you will need to be interested in Food Science and Nutrition and should have achieved at least 5 GCSEs or equivalent including English and Math's grade C or above.

## COURSE STRUCTURE

### Year 12 and 13

The Level 3 certificate in Food Science and Nutrition consists of 1 unit:

Unit1- Assessed by exam and is equal to 50% of the certificate marks

Unit 1- Assessed by non-exam assessment which is marked by the teacher and is equal to 50% of the certificate marks

This qualification will enable you to demonstrate an understanding of the science of food safety, nutrition and nutritional needs in a wide range of contexts, and through on-going practical sessions, to gain practical skills to produce quality food items to meet the needs of individuals. It has been designed to offer exciting, interesting experiences through applied learning, i.e. through the acquisition of knowledge and understanding in purposeful, work-related contexts, linked to the food production industry. By studying for this certificate alongside other relevant qualifications at Level 3 e.g. A Level Biology, Physical Education, Sociology, you will gain the required knowledge to use the qualification to support entry to higher education courses

## HOW WILL THIS QUALIFICATION HELP ME IN THE FUTURE?

The Level 3 certificate in Food Science and Nutrition provides a route to employment or higher education in the many diverse areas of the food industry including specialist areas such as Catering, Public Health, Human Nutrition and Food and Technology.



# HEALTH AND SOCIAL CARE

WJEC Level 3 Certificate

## PROFILE

This qualification enables you to develop and demonstrate knowledge, skills and understanding within the context of health and social care services. The knowledge, understanding and skills you are required to achieve within these qualifications build on the content of the Level 2 Health and Social Care: Core qualification.

It is strongly recommended that, if you are undertaking either of these qualifications, you have completed or are currently completing the Level 2 Health and Social Care: Core qualification.

## CONTACT

**Subject Lead**  
Mrs R Fudge

**EMAIL:**  
Fudger@newportschools.wales

## ASSESSMENT STRUCTURE

3 compulsory units

## TYPICAL ENTRY PROFILE

To gain access to this course you will need to be interested in Health and Social care and should have achieved at least 5 GCSEs or equivalent including English and Math's grade C or above.

## COURSE STRUCTURE

### Year 12 and 13

The Level 3 certificate in Health and Social care consists of 3 units:

#### Unit 1: Principles of care and safe practice within outcome-focused, person-centred care

In this unit, assessed through a non-examination assessment (NEA) you will: Gain knowledge and understanding of professional responsibilities, roles and accountabilities of health and social care workers within the sector learn about legislation, national policies, codes of conduct and professional practice that support health and social care workers in their roles gain knowledge of ethical issues and approaches when providing outcome-focused care understand the importance of positive relationships, trust, effective communication and promoting quality care that is.

#### Unit 2: Factors affecting individuals' growth and development across the lifespan and how this impacts on outcomes, care and support needs

In this unit, assessed through an examination, you will gain knowledge and understanding of the factors that affect an individuals' growth and development across the lifespan and the effects this can have on their personal well-being outcomes and care and support needs.

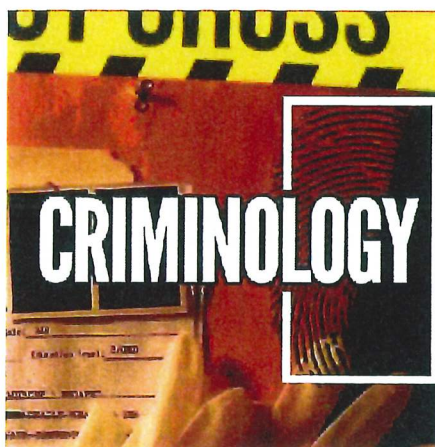
#### Unit 3: Promoting the rights of individuals across the lifespan

In this unit, assessed through a non-examination assessment (NEA), you will gain knowledge and understanding of the rights of individuals and the barriers to participation they may face, how these are promoted and challenged to improve health and well-being.

## HOW WILL THIS QUALIFICATION HELP ME IN THE FUTURE?

The Level 3 certificate in Health and Social care provides a route to employment or higher education in the many diverse areas of the Care industry including specialist areas such as Health care settings, Public Health, Social care or NHS.





## PROFILE

This qualification looks at the types of crime that take place within our society. How do we decide which behaviour is criminal? How do we explain why some people commit crime and how can we use different theories of criminality to explain this behaviour?

You will study real life cases in order to gain an understanding of the criminal justice system from the crime scene all the way to the courtroom and look at how social control is achieved within our society.

## CONTACT

**Subject Lead**  
Miss K Smith

EMAIL:  
Smithk406@newportschools.wales

## ASSESSMENT STRUCTURE

1 x controlled assessment  
1x Exam

# CRIMINOLOGY

WJEC Level 3

## TYPICAL ENTRY PROFILE

---

To gain access to this course you will need to be interested in Criminology and should have achieved at least 5 GCSEs or equivalent including English and Math's grade C or above.

## COURSE STRUCTURE

---

### Year 12 and 13

The Level 3 A level in Criminology consists of 2 units:

Unit 1: This unit is assessed through an 8 hours-controlled assessment which is internally assessed within school and external moderated.

Unit 2: This unit is assessed through examination. The exam consists of short answers and extended writing questions which will last 1 hour and 30 minutes. This is external set and assessed.

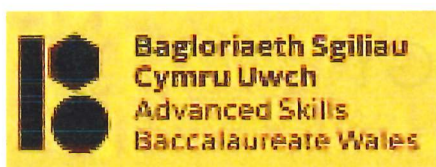
Criminology is an applied general qualification primarily designed to support learners progressing to university; however, much of the course is vocationally relevant, offering opportunities to learn from practical activities and the expertise of professionals currently working in criminology.

## HOW WILL THIS QUALIFICATION HELP ME IN THE FUTURE?

---

Criminology can open the door to an array of career paths that require understanding of the criminal justice sector. These may include careers in the police force or in police support roles, the field of forensic psychology, social and probation work or the prison services.





# ADVANCED SKILLS BACCALAUREATE WALES

## PROFILE

The Advanced Skills Baccalaureate Wales is an exciting qualification for students that adds a valuable new dimension to the subjects and courses already available for 16 to 18-year-old students. Already widely respected and accepted by universities across the UK as an entry qualification, the course has been redesigned for 2023 to make it even more rigorous so that students develop exactly the right skills they need for university, employment and life.

## CONTACT

Mr M Barnett-  
[Barnettm4@hwbcymru.net](mailto:Barnettm4@hwbcymru.net)

Miss L Bodman  
[BodmanL3@newportschools.wales](mailto:BodmanL3@newportschools.wales)

Miss K Smith  
[SmithK406@newportschools.wales](mailto:SmithK406@newportschools.wales)

## ASSESSMENT STRUCTURE

All coursework based.

## TYPICAL ENTRY PROFILE

You will have previously followed the Skills Challenge Certificate in Year 10 and 11. This Advanced Skills Baccalaureate Wales supports progression from the skills developed in the Skills Challenge Certificate course in Year 10 and 11.

## COURSE STRUCTURE

### Years 12 and 13

Learners will make use of a WJEC Digital Student Course Companion-My Journey that will be used to record development and assessment of the Integral Skills and the development of the Embedded Skills covered in the course.

All learners must complete three mandatory projects which provide a vehicle for learners to develop, practice and demonstrate the Integral Skills through a range of contexts that are relevant and current and that encourage learners to participate in critical and civil engagement, and to consider their well-being and the well-being of others.

The 3 projects include –

Global Community Project- 25%

Future Destinations Project-25%

Individual Project-50%

## HOW WILL THIS QUALIFICATION HELP ME IN THE FUTURE?

Many universities place great value on the Projects undertaken within the Welsh qualification. It is formally recognized that the skills and experiences students gain are valuable when continuing into higher education, or moving into employment.



# BUSINESS STUDIES

OCR Cambridge Technical Extended Certificate

## PROFILE

Business is all around us - from the local corner store to multinational organisations such as Google and Apple. The Level 3 OCR in Business is designed to provide highly specialist work-related skills in the Business sector. Students will gain the knowledge, understanding and skills that they need to prepare for employment or higher education. The units of the course give students an introduction to, and understanding of the business environment, management of resources, marketing and communication- all fundamental to the success of business organisations.

## CONTACT

**Subject Lead**  
Mr J White

EMAIL:  
White.J76@newportschools.wales

## ASSESSMENT STRUCTURE

Two terminal exams making up 50% of the final grade.  
Three coursework units internally marked and externally verified.

## TYPICAL ENTRY PROFILE

To gain access to this course you will need to be interested in Business and should have achieved at least 5 GCSEs or equivalent including English and Math's grade C or above.

## COURSE STRUCTURE

### Year 12 and 13

Unit 1 The Business Environment. In this unit students will develop an understanding of how and why businesses operate in the way they do, looking at a range of different types of business and business structures, and exploring how the ownership of a business and its objectives are interrelated.

Unit 2 Working in Business - covers the skills and understanding needed to work effectively within a business environment, including arranging meetings, working with business documents, making payments, prioritising business activities and communicating with stakeholders.

Unit 4 Customers and Communication. In this unit students will learn the purpose, methods and importance of communication in business and the appropriateness of different forms of communication for different situations.

Unit 5 Marketing and Market Research. Market research is the process by which organisations obtain the information they require. Students will gain an in-depth understanding of primary and secondary market research methods used to inform marketing decision-making and any constraints on marketing activities.

Unit 11 Accounting Concepts. This unit will give them an introduction to the foundations of business accounting. The unit will allow them to gain essential skills in, and knowledge of, the purposes of accounting, and the accounting procedures used to produce final accounts.

## HOW WILL THIS QUALIFICATION HELP ME IN THE FUTURE?

The Level 3 in Business provides a route to employment or higher education in the many diverse areas of business including specialist areas such as Management, Marketing, Finance, Law or Human Resources.



# FINANCE

## LIBF Level 3 Certificate/Diploma in Financial Studies

### PROFILE

The Level 3 Certificate focuses on the individual and our need to practice efficient and practical finance throughout our lives. The Level 3 Diploma builds on the certificate but applies the skills and knowledge learnt to the wider financial community, for example through business models and banking.

### CONTACT

**Subject Lead**  
Mr. Mark Barnett

**EMAIL:**  
Barnettm4@hwbcymru.net

### ASSESSMENT STRUCTURE

A combination of coursework and examinations.

### TYPICAL ENTRY PROFILE

---

Students must have attained at least a grade C in both English and Maths/Maths Numeracy GCSEs.

A successful student at this level will have a keen interest in finance, and will have enjoyed the numeracy aspect of Maths GCSE. Students may also have an interest in banking or accountancy.

### COURSE STRUCTURE

---

Six units are studied over the two years to offer learners an extensive and pertinent learning experience, including looking at macro and micro finance. There will be extensive practice of written assessment that in part will rely heavily on students having a proficient level of literacy.

#### Year 12

- Unit 1 – Financial Capability for the immediate and short term.
- Unit 2 – Financial Capability for the medium and long term.

#### Year 13

- Unit 1 – Financial Capability for the immediate and short term.
- Unit 2 – Financial Capability for the medium and long term.
- Unit 3 – Sustainability of an individual's finances
- Unit 4 – Sustainability of the financial services system

### HOW WILL THIS QUALIFICATION HELP ME IN THE FUTURE?

---

The financially-related content of DipFS serves as a strong grounding for undergraduate study within finance and business-related disciplines, with many students going on to study accounting, business, finance and banking. The qualification carries the maximum UCAS points available which can be counted towards university applications.